

Voice

# Stand By Me - C

♩ = 120

**Intro**

**Verse 1 Vocal Solo**

7

When the night has come

12

and the land is dark and the moon is the on - ly light you

16

see. No I won't be a-fraid No-o I-I won't be a -

21

**Chorus 1**

8

Just as long as you stand by me

33

When the pain of life comes rush ing in and it

38

looks like there's no way I'll get thru. I may fall-

42

- Yes I may fall But I will get up a - gain Just as long

46

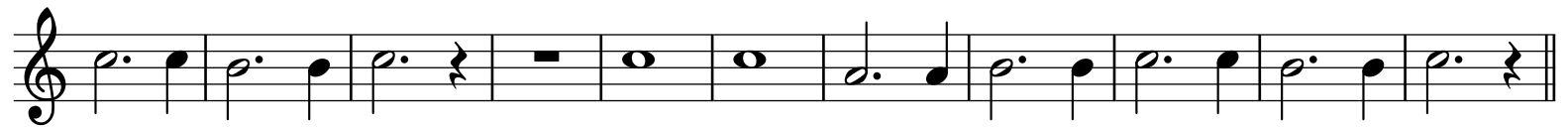
as you stand by me

**Chorus 2**

**Interlude 1**

9

62



**Verse 3**



If the sea we look u - pon should go emp-ty and dry

77



Or the mountains crum-ble to the sea

81



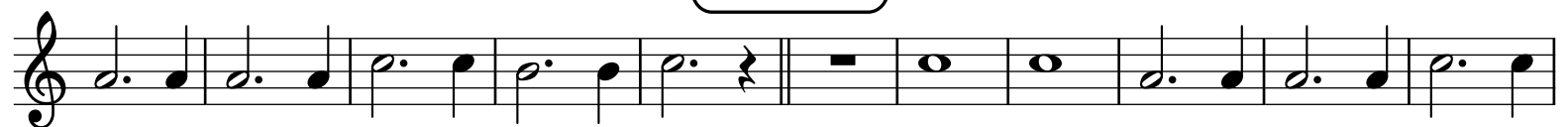
I won't cry No I won't cry I won't shed a

**Chorus 3**



tear Just as long as you stand by me

**Chorus 4**

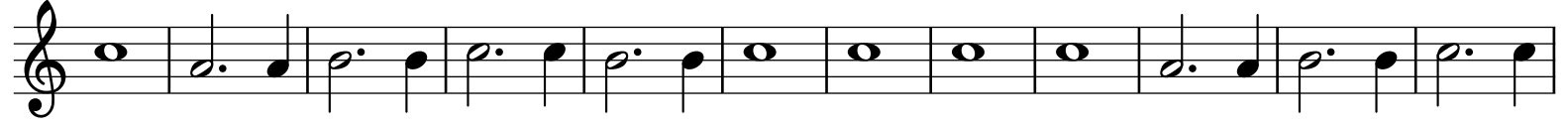


**Outro**

103



115



127

